

ZONING BOARD OF APPEALS AGENDA

Public Hearing Application # 3

Application # 21Z-0056
Kirk Wright/Sign & Lighting Services
1838 Empire Boulevard

See Pages to Follow

09/21/21



To Whom it May Concern,

We are requesting a special permit for additional signage for the Chipotle located at 1838 Empire Blvd Penfield NY 14580.

This building front faces two roadways (Empire Blvd and Creek St) and it would be advantageous to the location to have wall signage facing both streets. We are requesting approval for a 3rd sign on the south elevation of the building. There will be no adverse effects to the surrounding properties as they are also commercial properties.

If you have any questions or need additional information, please feel free to contact me.

Regards,

Kirk J Wright

Owner/Member

Sign and Lighting Services LLC

PO Box 597

Ontario NY 14519

585-265-4462 Office

585-370-2700 Cell

www.sign-lighting.com



CHIPOTLE STORE#4043
1838 EMPIRE BLVD,
WEBSTER, NY 14580

Job Number: 26598

b **broadwaynational**

SCANNED

212-0056

AERIAL VIEW
Scale: NOT TO SCALE



b **broadwaynational**

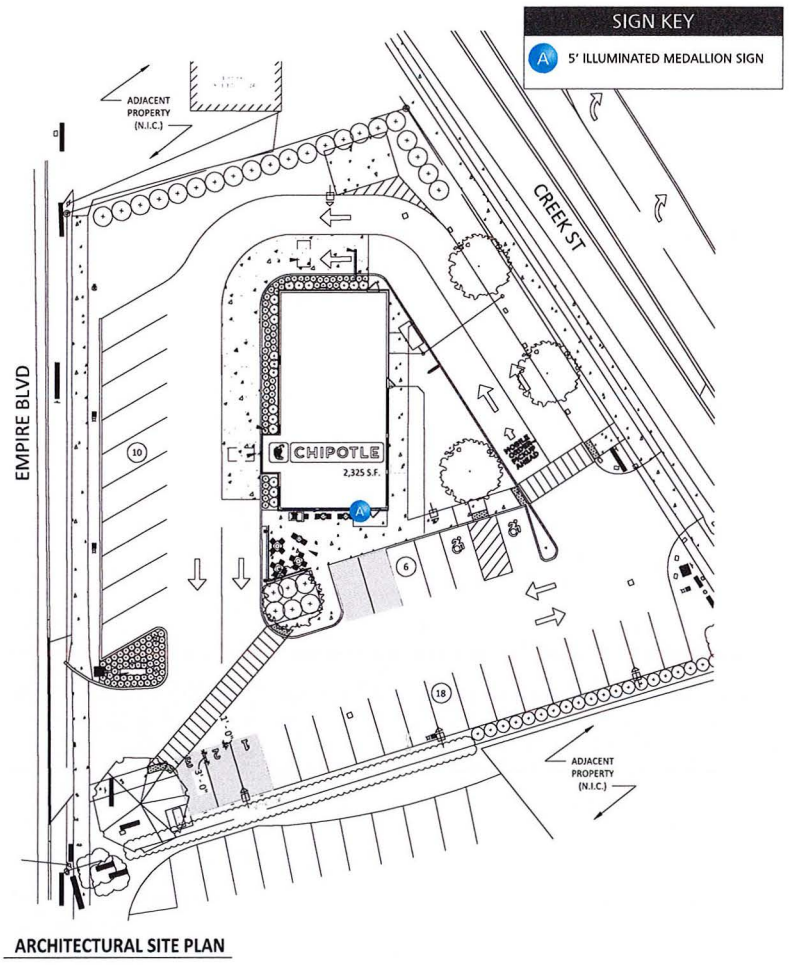
100 Davids Drive., Hauppauge, NY 11788
P631.737.3140 F631.737.3160
INTERNAL USE ONLY: 26598_09.17.21_03.00_IB

AERIAL VIEW
CHIPOTLE

Approved Rejected
 Approved with Corrections Revise and Resubmit
 Signature: _____ Date: _____

CHIPOTLE STORE#4043
1838 EMPIRE BLVD,
WEBSTER, NY 14580

21Z-0056



ARCHITECTURAL SITE PLAN

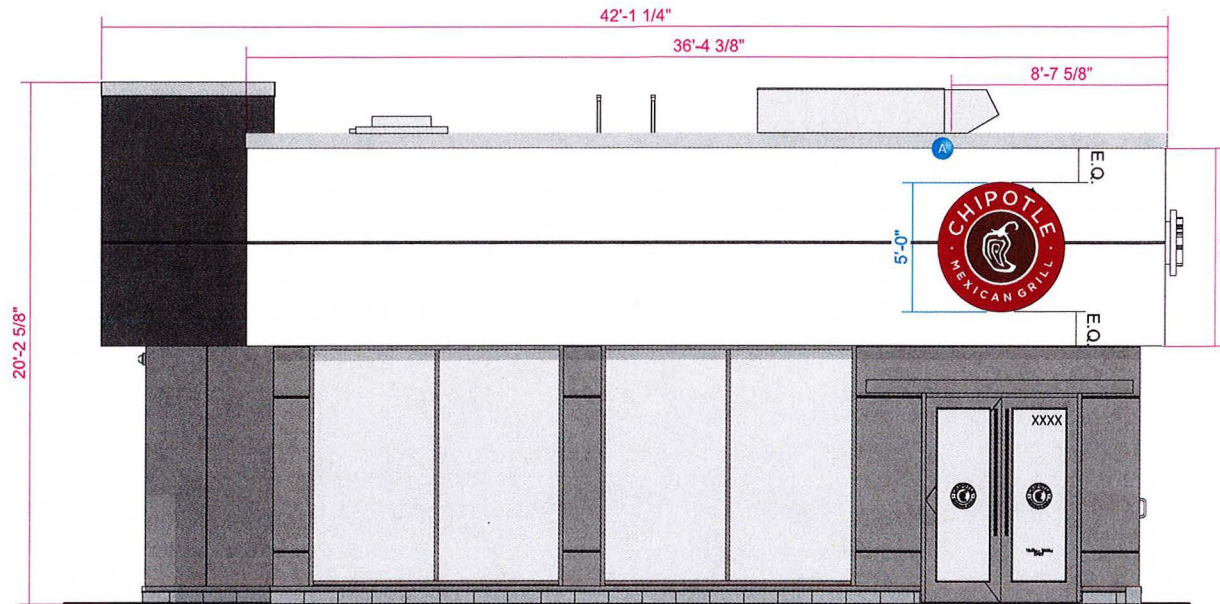
b **broadwaynational**
 100 Davids Drive., Hauppauge, NY 11788
 P631.737.3140 F631.737.3160
 INTERNAL USE ONLY: 26598_09.17.21_03.00_IB

SITE MAP
CHIPOTLE

Approved Rejected
 Approved with Corrections Revise and Resubmit
 Signature: _____ Date: _____

CHIPOTLE STORE#4043
 1838 EMPIRE BLVD,
 WEBSTER, NY 14580

212-0056



EXT ELEV - SOUTH

1/4" = 1'-0"

b **broadwaynational**

100 Davids Drive., Hauppauge, NY 11788
P631.737.3140 F631.737.3160
INTERNAL USE ONLY: 26598_09.17.21_03.00_IB

ELEVATION
CHIPOTLE

Approved
 Approved with Corrections
 Rejected
 Revise and Resubmit
Signature: _____ Date: _____

CHIPOTLE STORE#4043
1838 EMPIRE BLVD,
WEBSTER, NY 14580

RECEIVED
 SEP 21 2021
 21Z-0056

QTY (1)
 SIGN A

5' LED ILLUMINATED WALL MOUNTED MEDALLION (IN STYLE OF M-2)
 Scale: 1/2"=1'-0"

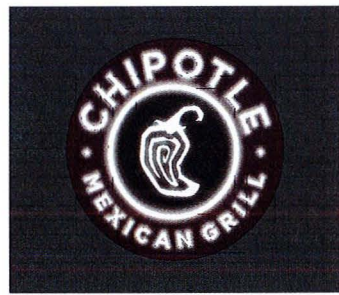
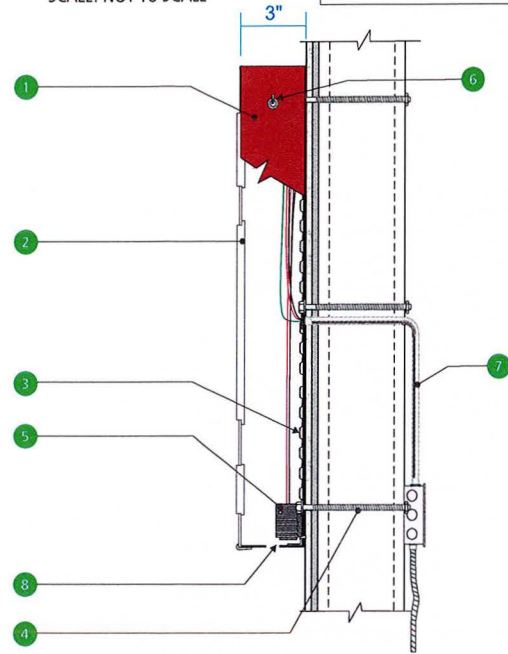
19.63 Sq. Ft.



NOTES:
 LIFT POINTS (SIGN HOOKS)
 WILL BE PROVIDED FOR ALL SIGNS

SIDE DETAIL
 SCALE: NOT TO SCALE

NOTES:
 3/4" FIRE TREATED PLYWOOD
 BLOCKING PROVIDED BY OTHERS



ILLUMINATION RENDERING

Color Key

PMS#4625C Adobo Brown	PMS#484C Roasted Red

NOTES:
 ELECTRICAL WIRING FROM SIGN WILL NEED TO BE WIRED INTO THE PRIMARY ELECTRICAL SOURCE MUST BE A DEDICATED CIRCUIT AS PER CODE.

NOTES:
 ALL ELECTRICAL PARTS & ASSEMBLIES UL LISTED APPROVED UL LABELS ATTACHED IF REQUIRED.

SPECIFICATIONS FOR (1) ILLUMINATED FLUSH MOUNTED MEDALLION

- 1 **CABINET**
 CABINET TYPE= (.080", 1"x 7 3/8") routed aluminum retaining/trim ring Face/Return PTM Roasted Red
 FACE= 1/8" Aluminum w/ 3" returns. Returns are 3" x 1/16" aluminum. Spot weld/Versilok returns to back side of face
- 2 **GRAPHICS**= 1" Clear acrylic w/ 7/8" push-thru w/ vinyl overlay and second surface diffuser film
- 3 **ILLUMINATION**= Sloan Prism Mini White LEDs or equivalent
- 4 **MOUNTING** = 3/8" Toggle bolts - mounting may vary due to site conditions
- 5 **ELECTRICAL**
 PRIMARY= 120V power supply mounted inside cabinet
 SECONDARY= 12V LED wiring housed in cabinet
- 6 **POWER DISCONNECT**=Toggle switch on cabinet return
- 7 120v electrical to sign and final hook-up is by others
- 8 Weep holes for drainage

b **broadwaynational**
 100 Davids Drive., Hauppauge, NY 11788
 P631.737.3140 F631.737.3160
 INTERNAL USE ONLY: 26598_09.17.21_03.00_IB

DETAIL
CHIPOTLE

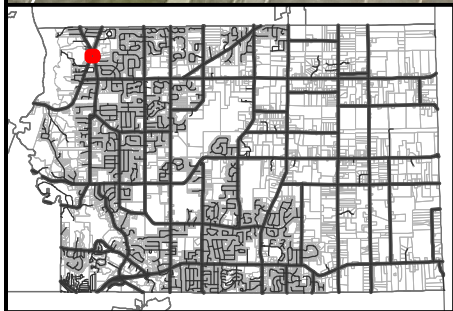
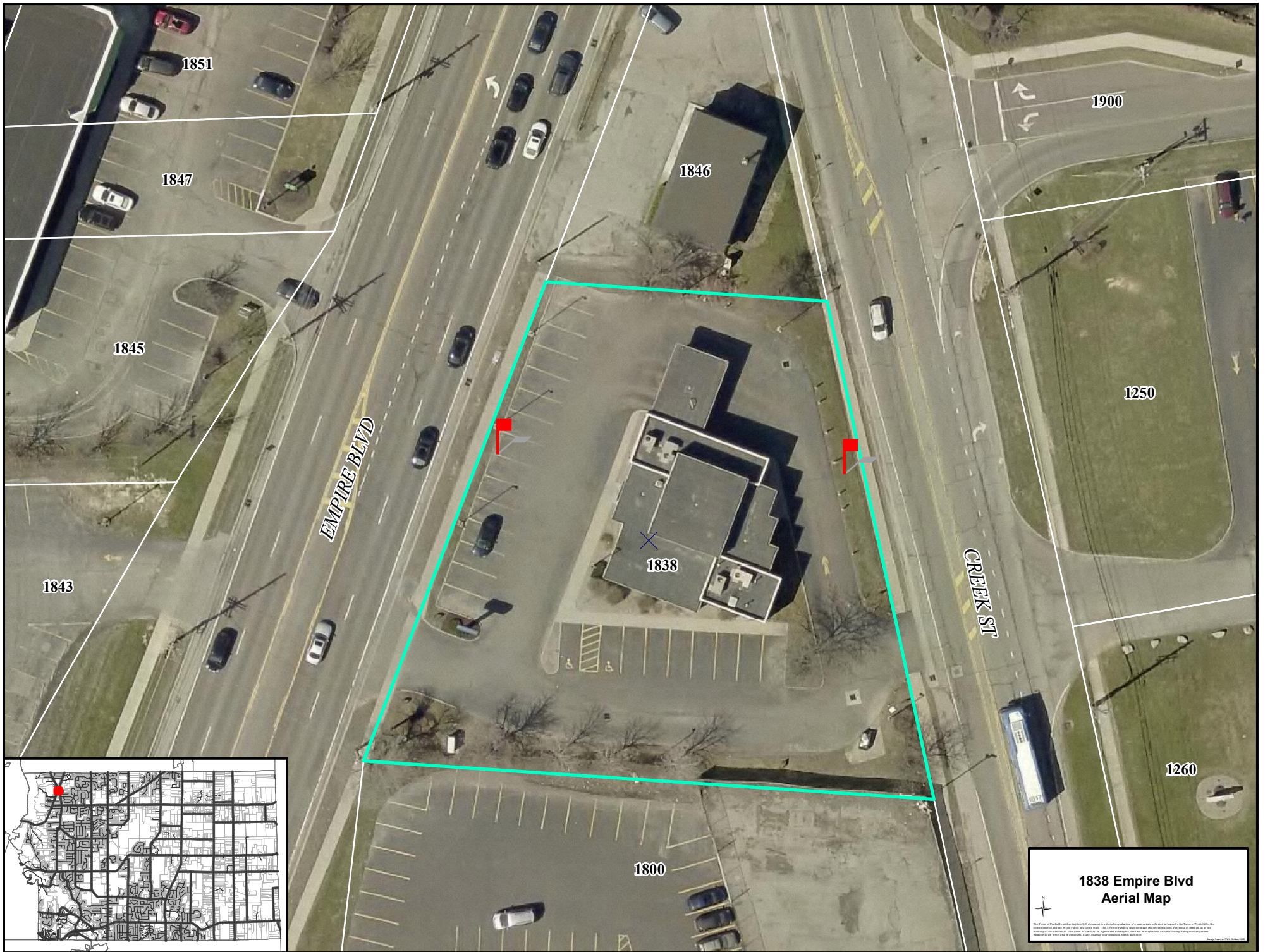
Approved
 Approved with Corrections
 Rejected
 Revise and Resubmit

Signature: _____ Date: _____

CHIPOTLE STORE#4043
 1838 EMPIRE BLVD,
 WEBSTER, NY 14580

21Z-0056

SCANNED



**1838 Empire Blvd
Aerial Map**

© 2014 GeoEye, Inc. All rights reserved. GeoEye is a registered trademark of GeoEye, Inc. All other trademarks are the property of their respective owners. This map is provided as a service to the public and is not intended to be used for any other purpose. The use of this map is subject to the terms and conditions of the GeoEye website. If you are unable to view this map, please contact GeoEye at 1-800-447-2343.